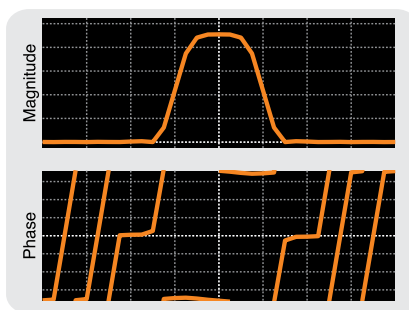


# RTHawk Research™

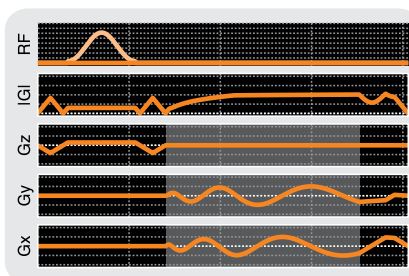
## An MRI Software Development Platform For:

- Creating pulse sequences
- Integrating deep learning algorithms
- Integrating with third-party devices
- Multi-nuclear imaging
- Real-time data processing with modular reconstruction blocks
- Interactive and real-time scanning

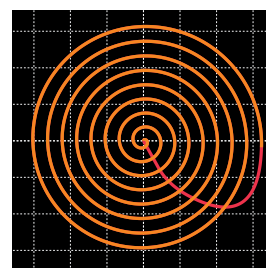
## Build Sequences



Graphically create entire pulse sequences with the SpinBench tool.



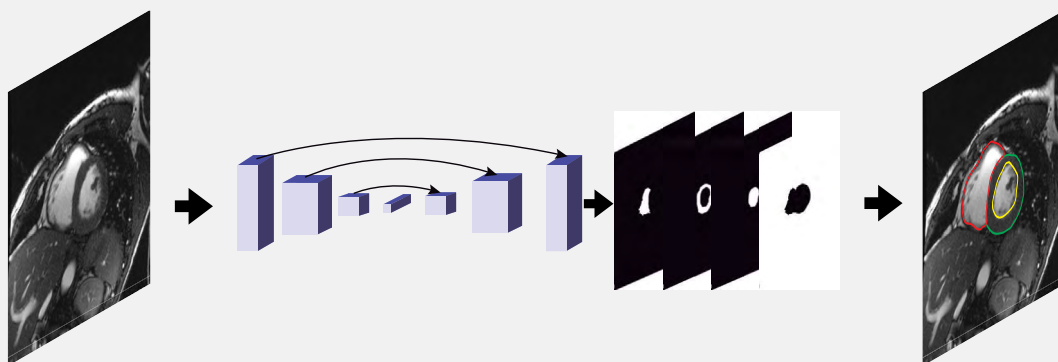
Test designs with the integrated Bloch simulator.



## Real-Time Reconstruction



Quickly create high-performance processing pipelines with our integrated reconstruction engine, which includes blocks for common mathematical operations such as the Fast Fourier Transform, non-uniform gridding and compressed sensing that can convert raw data to displayed images. You can also design your own custom blocks.

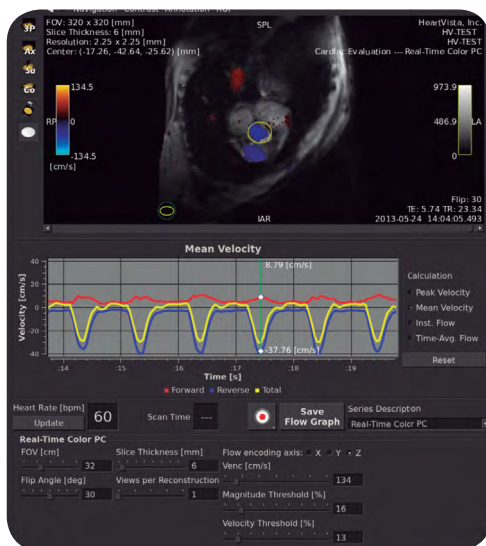


Integrate deep learning models built with TensorFlow into the reconstruction for inference on the fly.

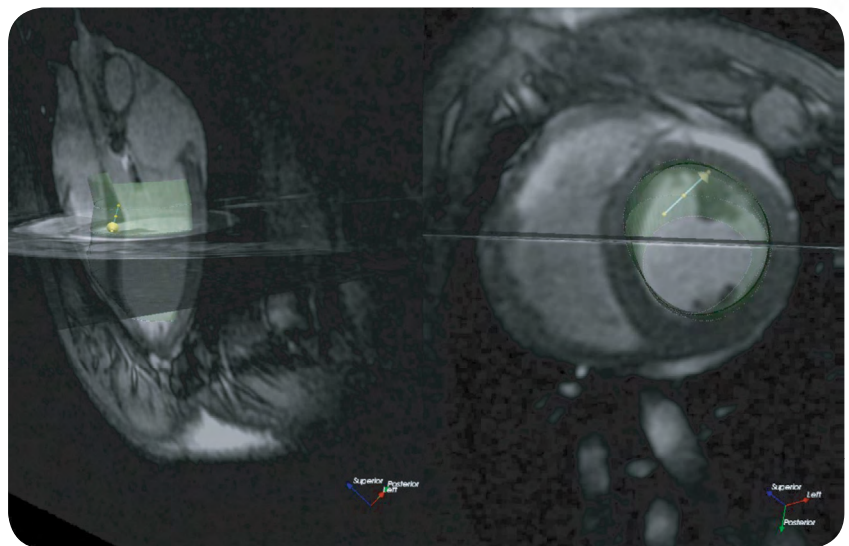
# RTHawk Research™

## User Interaction

Apply real-time analysis with custom user interfaces. Incorporate real-time data received from external hardware, such as tracking coils or sensors.



Phase-contrast App displays color flow maps and a graph of flow through the ROI in real time



Cardiac electrophysiology catheter in a porcine model using Vurtigo (Sunnybrook Research Institute, Toronto, Canada)

## Getting Started

The RTHawk Research platform comes with an array of tools enabling you to start building your application immediately.

- Extensive API documentation
- Hours of tutorial videos guiding you through App development
- User forums to ask questions of the community
- Full source code for numerous fully functional Apps including real-time and interventional applications
- Monthly user meetings attended by RTHawk Research developers

RESEARCH DEVICE: RTHawk Research is intended for investigational purposes only, and shall only be used under appropriate ethics committee research protocol approvals.

© 2023 HeartVista Inc. "Vista.ai", "SpinBench", "RTHawk", and "RTHawk Research" are trademarks of HeartVista, Inc.

## Multi-Vendor Support

Conduct research on both GE and Siemens scanners without the need to rewrite your pulse sequences.

## Try it Out Today

Download a free copy of SpinBench from [spinbench.com](http://spinbench.com) and experience first-hand the ease of graphically creating and simulating advanced pulse sequences.